



# Better Training for Safer Food *Initiative*

Training course on “Animal Welfare in pig production”

**Farm visits**  
**Birte Broberg**

*This presentation has been produced under the contract n. 2012 96 04 with the Executive Agency for Health and Consumers (EAHC). The content of it is the sole responsibility of Istituto Zooprofilattico Sperimentale dell'Abruzzo e del Molise "G. Caporale", Teramo and can in no way be taken to reflect the views of the Executive Agency for Health and Consumers or any other body of the European Union. The Executive Agency for Health and Consumers or any other body of the European Union will not be responsible under any circumstances for the contents of communication items prepared by the contractor.*

**Herning, Denmark, 12-15 May, 2014**

## Some average figures (2013) from Danish pig production – commercial farms

Size of farms: 680 sows/year

Piglets born alive pr. litter: 15.4

• Stillborn piglets pr. Litter: 1.7

• Weaned piglets pr. litter: 13.3

Mortality - live born: 13.7

Weight at weaning: 7 kg

Age at weaning: 31 days

Weaned per year-sow: 30.0

The use of nursing sows is common



## Farm 1

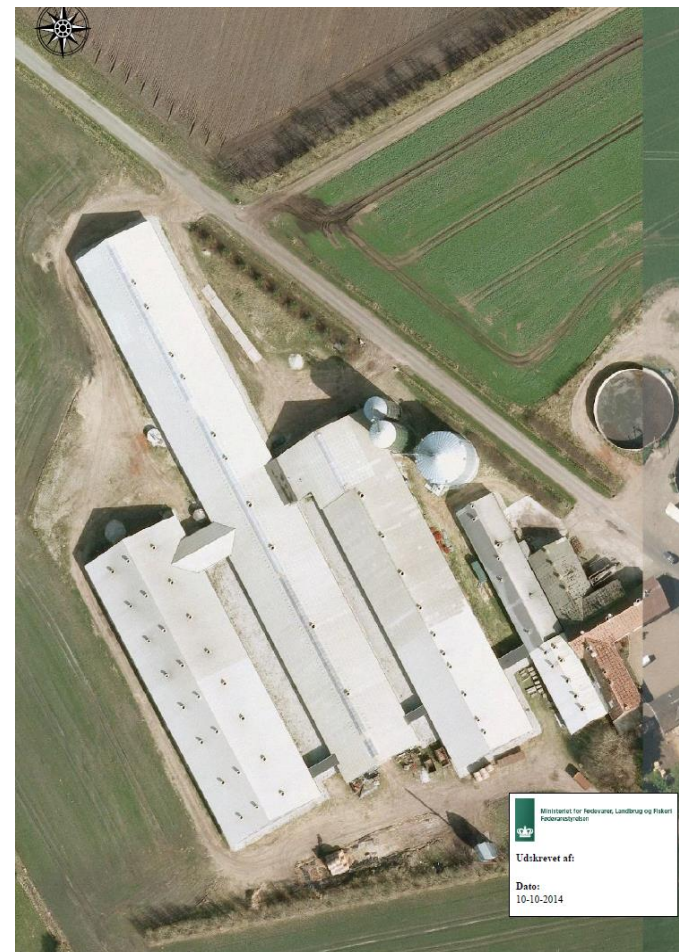
1150 sows, gilts and boars

5.500 weaner pigs (< 30 kg)

700 slaughter pigs (> 30 kg)

- 35.000 weaners (30 kg) are sold yearly to Germany the rest are reared for slaughter at another premises.
- Piglets born alive pr. litter: 15,8  
Piglets weaned pr. litter: 14  
Weaning age: 4 – 5 weeks  
Piglets weaned pr. Year-sow: 33.5

Sows (own production) in stable groups (21 – 22)



## Farm 2

630 sows, gilt and boars

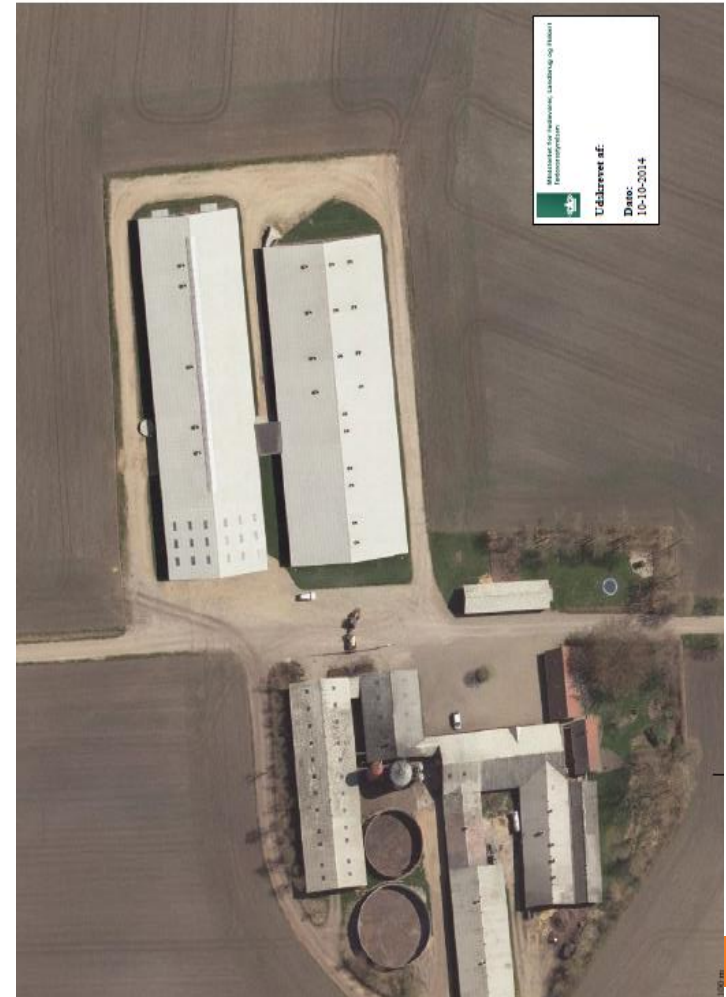
3.000 weaner pigs (< 30 kg)

19.500 weaners (30 kg) sold to Danish farmers the rest reared on another premises.

- Piglets born alive pr. litter: 16.3
  - Piglets weaned pr. litter: 15.1
  - Weaning age: 5 weeks
- Piglets weaned pr. year-sow: 34,5

Sows (own production) in dynamic groups

Sows are loose housed from weaning (UK-production)







## Farm 3 - weaners

0 sows, gilts and boars

9150 weaners (< 30 kg)

- 1400 slaughter pigs

- Weaners sold at 30 kg – 1000 pr. week to Germany



## Farm 4

1.000 sows, gilts and boars

0 weaner pigs

Weaners (33.000 a year) are transferred to 3 other premises

Piglets born alive pr. litter: 16,5

Piglets weaned pr. litter: 14.5

Piglets weaned pr. Year-sow: 33

Weaning age: 4 – 5 weeks

Sows (own production) loose housed from weaning (UK-production).

Individual pens from weaning to 4 weeks after service, then stable groups (15).





# Code of conduct and guidelines for infield exercise

- The scope is to provide a common frame for the approach during infield visits

Biosecurity important





# Checklist for infield exercise

List of EU minimum requirements of Dir. 2008/120/EC and Dir. 98/58/EC (in italics) according to WQ criteria

## FARROWING SOWS\*

Welfare Quality® PRINCIPLES	Welfare Quality® CRITERIA	EU minimum requirements	Notes for discussion
<b>Good feeding</b>	Absence of prolonged hunger	<i>Appropriate diet to satisfy nutritional needs</i>	
		<i>Feeding at least once a day</i>	
		<i>Feeding equipment, designed, constructed and places so that contamination of food and the harmful effects are minimised</i>	
	Absence of prolonged thirst	Permanent access to sufficient quantity of fresh water <i>Watering equipment, designed, constructed and places so that contamination of water and the harmful effects are minimised</i>	
<b>Good housing</b>	Comfort around resting	Design of farrowing pens (nest flooring, space for suckling)	
		Nesting material for farrowing gilts and sows	
		Avoidance of continuous noise level as loud as 85 dBA	
		<i>No permanent darkness nor without appropriate period of rest</i>	
	Thermal comfort	Laying area physically and thermally comfortable, drained and clean	
		<i>Air circulation, T, RH</i>	
		<i>Backup and regularly tested alarm systems in case AW is dependent on an artificial ventilation system</i>	
	Ease of movement	Lightening on farm (intensity 40 lux at least 8 hours/day) Space allowance	
	Absence of	<i>No sharp edges or protrusions likely to cause injuries to animals</i>	

# Checklist for infield exercise

List of EU minimum requirements of Dir. 2008/120/EC and Dir. 98/58/EC (in italics) according to WQ criteria

## FARROWING SOWS\*

Welfare Quality® PRINCIPLES	Welfare Quality® CRITERIA	EU minimum requirements	ABM from Welfare Quality®	Resource Based Measures
<b>Good feeding</b>	Absence of prolonged hunger	<i>Appropriate diet to satisfy nutritional needs</i>	Body condition score	Diet composition Feeding system and maintenance
		Feeding at least once a day		
		<i>Feeding equipment, designed, constructed and places so that contamination of food and the harmful effects are minimised</i>		
	Absence of prolonged thirst	Permanent access to sufficient quantity of fresh water <i>Watering equipment, designed, constructed and places so that contamination of water and the harmful effects are minimised</i>	Water supply	Type of drinkers Height and position Water flow and quality (microbiological analysis)
<b>Good housing</b>	Comfort around resting	Design of farrowing pens (nest flooring, space for suckling)	Bursitis Shoulder sores Absence of manure on the body	Width of crates
		Nesting material for farrowing gilts and sows		Type and amount
		Avoidance of continuous noise level as loud as 85 dBA		Noise measurement at the level of pig ear
		<i>No permanent darkness nor without appropriate period of rest</i>		Light program* (photoperiod, light spectrum, window area, number, type and wattage of artificial lights)
	Thermal	Laying area physically and thermally comfortable, drained and clean	Panting	Pen cleanliness Cooling facilities
		<i>Air circulation, T, RH</i>		Measure of T and RH Air speed and air flow patterns

# Farm description

# Data recordings



# General impression

# Our findings

# Conclusions

# Improving suggestions





This presentation has been produced under the contract n. 2012 96 04 with the Executive Agency for Health and Consumers ([EAHC](#)). The content of it is the sole responsibility of Istituto Zooprofilattico Sperimentale dell'Abruzzo e del Molise "G. Caporale", Teramo and can in no way be taken to reflect the views of the Executive Agency for Health and Consumers or any other body of the European Union. The Executive Agency for Health and Consumers or any other body of the European Union will not be responsible under any circumstances for the contents of communication items prepared by the contractor.

## **Istituto Zooprofilattico Sperimentale dell'Abruzzo e del Molise "G. Caporale"**

Campo Boario, 64100, Teramo, Italy

Email: [sancotraining@izs.it](mailto:sancotraining@izs.it)

Website: [www.sancotraining.izs.it](http://www.sancotraining.izs.it), [www.izs.it](http://www.izs.it)

Phone: +39 0861 332673

## **Better Training for Safer Food BTSF**

• *European Commission  
Consumers, Health and Food Executive Agency  
DRB A3/042  
L-2920 Luxembourg*